



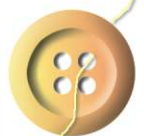
# VisualGEMS

**The ERP Solution for  
Garment Export Management**



*The Technological Edge*

**For Your Business**



Optimal Infotech Pvt. Ltd. is the leading Professional Information Technology firm dedicated to assisting Garment Export Organizations in deploying high-impact Enterprise Resource Management System- **VisualGEMS** that delivers exceptionally high levels of efficiency.

**VisualGEMS** is a proven software solution which can be implemented quickly and delivers results from day one, ensuring high returns on your investments.

[www.visualgems.com](http://www.visualgems.com)

*VisualGEMS is an end-to-end integrated Enterprise Resource Planning software specially designed for the garment manufacturing and exports industry. VisualGEMS provides a platform for effective management and control of the entire business activities.*

*VisualGEMS is designed to raise your organizational productivity levels to new high enabling more work with same resources.*

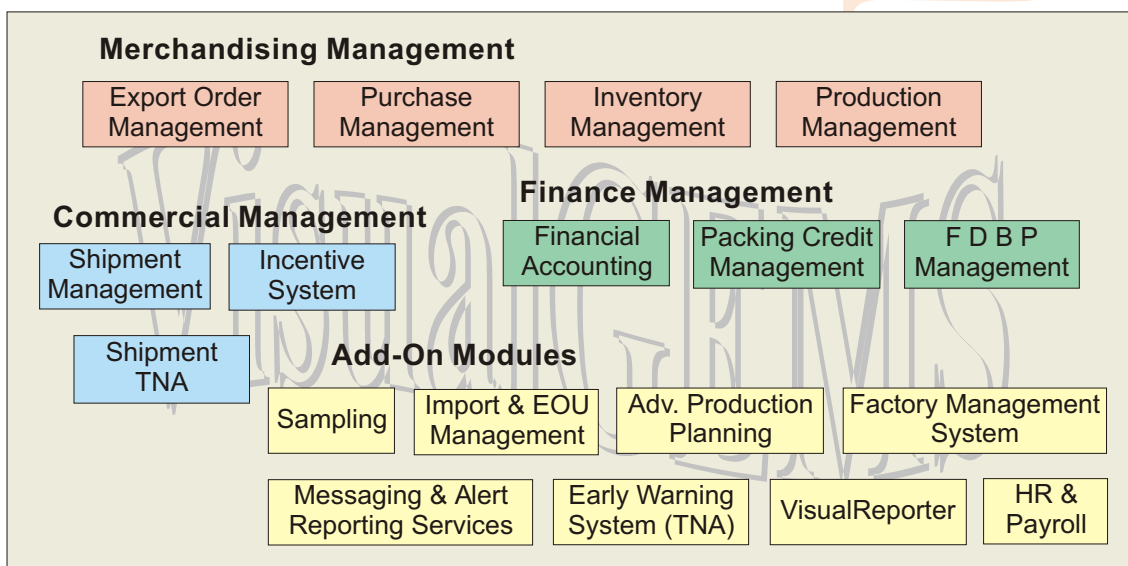
### Application Features :

- Supports Export orders with multi-style, multiple delivery lots, prepacks & Multiple PO's.
- Generates accurate order wise material plan, production plan & shipment plan.
- Provides instant re-work of material requirement plan to changing customer's needs.
- Sketch / photo of garment can be stored with items, orders, style bank or measurement chart.
- Provides authorization system of material purchase and issues for cost control.
- Controls purchase ordering based on purchase planning & approved material plans with comprehensive decision support aid from past purchase data.
- The material receipts are automatically allocated order wise based on material plan.
- Provides on-line stock control, resulting in reduced raw material & garment inventory.
- Features Interactive Reporting interface for easy customization of presentation formats with user defined column positions, column titles, font size, sorting & filtering on desired columns & cells.
- Unlimited customized reports can be created by users.
- Graphical presentation of MIS reports.
- Generates consolidated material requirements plan for multiple orders with summary.
- Locking of approved or confirmed cost sheets & BOM's to prevent unwanted alterations.
- Special features of Yarn Working for knitted garments merchandising and fabric/ accessory working for those who start from grey fabrics purchase and processing.

### Technology Features :

- **VisualGEMS** is a pro-active event driven Enterprise Resource Management System.
- **VisualGEMS** maintains on-line data updating across all modules.
- Works on 32-bit window based architecture providing optimum utilization of available computing power and excellent data warehousing.
- Capable of tight inter-module integration for end-to-end information sharing.
- Produces high quality documents / reports supporting laser and DOS printers.
- Offers connectivity to a range of backend (RDBMS such as Oracle & MS-SQL Server).
- Provides E-mail based on-line paperless transmission of documents & reports in PDF.
- OLE compliant for export of documents & reports in MS-Word, MS-Excel & PDF format.

### Functional Building Blocks of VisualGEMS :



# STANDARD MODULES

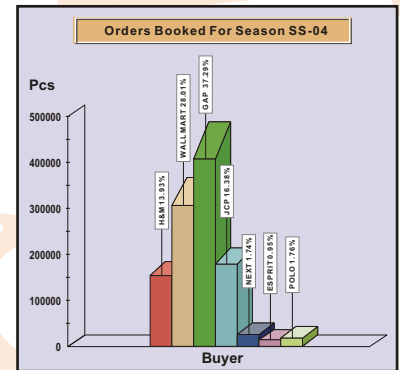


## Export Order Management :

- Export Order & its tracking buyer wise, style wise, merchandiser wise, order status wise, etc.
- Tracking of order wise sample approvals (pending, delayed, due) against target dates.
- Material Requirements planning (fabric, accessories, and yarns) from per piece consumption.
- Order wise estimated costing (budgeting).
- Tracks measurement charts & standard measurements.
- Backward working of grey fabric & yarn requirements from finished fabric consumption.
- Export order locking, closure & cancellation.

## Purchase Management :

- Generation of Local & Import Purchase Orders for fabrics, accessories & yarn from the material requirements planning done (single export order or consolidated) in the Export Order Management stage.
- Tracking of deliveries against the P.O.s. & monitoring overall purchase against the export orders.
- Tracking confirmation from supplier & access / short purchases.



## Inventory Management :

- Receipt / Issue of raw materials against Purchase Orders, Export Orders & Production Orders.
- Tracking of stocks: daily inwards / daily outwards / ledgers / location wise / party wise.
- Tracking of returns from factory, processors as well as to suppliers & buyers.
- Tracking garments made, shipped, balance & rejects order or style wise in quantity or ratio.
- Stock Transfers (between orders & locations) and stock adjustments.

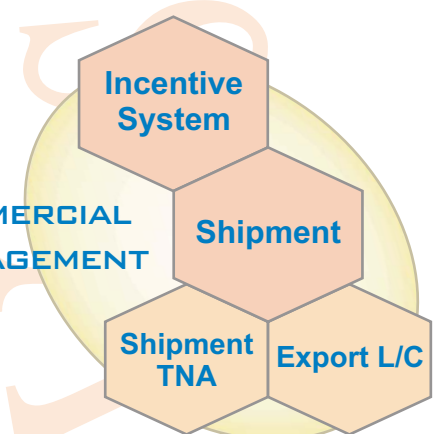
## Production Management :

- Production planning, allocating factory & daily targets.
- Generation of Production Orders against Export Orders & tracking of garments made.
- Export Order wise production monitoring at user defined operations points.
- Tracking issues to the factories & material reconciliation at the end of production.
- Daily monitoring data import facility from factory in MS-Excel format.

## Incentive System & Shipment TNA :

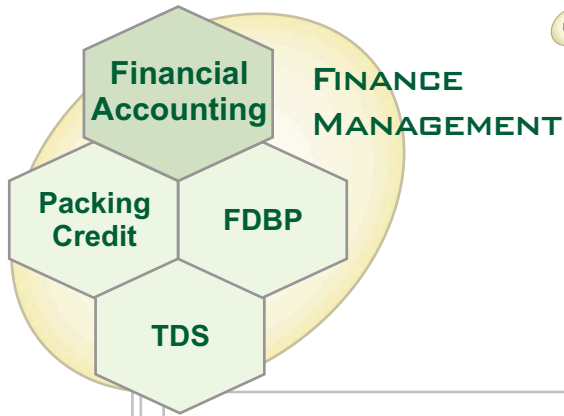
- Provides configurable incentive system based on drawback product categorizations as well as DEPB.
- Incentive calculations are built-in with Invoice generation.
- Also supports Incentive re-calculations & auto posting of incentive value to VisualFA.
- Pre & Post shipment document tracking based on user defined TNA.

COMMERCIAL  
MANAGEMENT



## Shipment Management :

- Packing list, custom invoice, shipping bill, commercial invoice & bank documents against export orders & L/C.
- Calculation & tracking of duty drawback against shipments.
- Tracking of realizations, short shipments etc.
- Multiple packing lists allowing buyer wise formats.
- Export Sales Registers and User defined reports.



## Finance Management :

- Bank, Cash, Purchase & Sales Vouchers.
- Receivables, Payables, General Ledger, Trial Balance & Bank Reconciliation.
- On Line Balance Sheet / P&L with drill down to transactions (vouchers).
- Consolidated Statements for group of companies (P & L, B/S, Funds Flow etc).
- Sales, Purchase Summary Reports.
- Integration with Inventory & Export Invoice module.

## OPTIONAL MODULES

### Sampling Management

- Maintain graphical Fabric library.
- Track Sample Requisitions, CAD details, Pattern & Marker details.
- Sampling priorities & monitoring daily production & sample status.

### Advanced Production Planning (APP)

- Defining factory capacity based on standard style.
- Capacity calculation based on holidays, planned overtime & efficiency.
- Graphical order allocation Chart for monitoring order allocations.
- Allocate orders to factories based on criteria such as number of machines, daily output or production span.

Year/Month	Order Qty	No. Of Mc	Actual Buffer	1	2	3	4	5	6	7	8	9	10	11	12	13	14	15	16	17	18	19	20	21	22	23	24	25	26	27	28	29	30	31
Style No				S	S	M	T	W	T	F	S	S	M	T	W	T	F	S	S	M	T	W	T	F	S	S	M	T	W	T	F	S	S	M
INSIS 04	240	3	0																															
INSIS 04	560	4	0																															
KGD 95A	316	1	31																															



### Factory Management System

- SMV Calculations for each style.
- Line Balancing, machine & operator allocation.
- Bundle ticketing, bar code printing & bundle tracking.
- Barcode or electronic device based real time data capture.
- Monitoring hourly and daily production line wise / style wise.

### Messaging & Alert Reporting Services

- User to user & user to group messages across the network.
- Message broadcast to all logged in users from VGMessenger console.
- Event reporting in the form of messages to authorized users or groups based on predefined rules and live data.
- Message logs to track already viewed messages.

### Early Warning System-TNA

- Order wise Time Action Charts based on Ship date, Ex Factory date or PCD.
- Person wise Activity Report for a defined period.
- Proactive and escalating reminders based on TNA.
- Email or Pop-up alerts for due, delayed & crisis events.

Sr No.	Activity Name	Dept	User	Day W.R.T. Ship Dt	Target Date	Revise Date	Remind Before [Days]	Status	Actual
1	Order-Confirmation	MERC	0140	70	07-Dec-2003	07-Dec-2003	2	Completed	09-Dec
2	Fabric-Ordered	FAB	0050	69	08-Dec-2003	08-Dec-2003	2	Completed	10-Dec
3	Lab-Dip-Sent-On	MERC	0140	65	12-Dec-2003	12-Dec-2003	2	Completed	12-Dec
4	Fit-sample-sent	MERC	0140	65	12-Dec-2003	12-Dec-2003	2	Completed	13-Dec
5	LAB-Dip-Apprd.	MERC	0140	62	15-Dec-2003	15-Dec-2003	2	Completed	18-Dec
6	Fit samples apvd	MERC	0140	58	19-Dec-2003	22-Dec-2003	2	Not started	
7	Size Set Sent On	MERC	0140	45	01-Jan-2004	01-Jan-2004	2	Not started	
8	Bulk Fab first pc recvd	MERC	0140	45	01-Jan-2004	01-Jan-2004	2	Not started	

## HR and Payroll

- Employee punch data import from Automatic Time Readers devices.
- User defined heads for earnings and deductions with user defined formula & conditions for each salary head.
- Configurable leaves & applicable rules.
- Detailed record of employee particulars with history.
- Integration with Accounts and Attendance module.
- Print Pay Slip, schedules and salary statements.

## Import & EOU Management

- Supports transactions such as Pls, POs Import Register, Payments(Advances, Freight, DP, Duty, Clearing Agent Bill, Courier Expenses etc).
- Tracking of Import L/C against Purchase Orders.
- Provides MIS for tracking Import Orders & Payment status.
- Provides documents such as FEMA & OGL Declarations
- EOU functionality covers Bond Master, CT3, ARE3, Procurement Cert., Re-Warehousing Cert, Consumption Cert, etc.

## Benefits of using VisualGEMS :

- Minimize risk by working with professionals having experience with over 400 Garment Export organization's computerization across 8 countries.
- Gain direct access to outstanding Information Technology solutions expertise.
- Use proven technology based solution, which is complete, robust and easy to use.
- Single solution covering all requirements offers standardization of working systems, enables shorter learning times & reduces overall cost of ownership.
- Maximize the returns on your hardware and software investments.
- Fully protect your investments in the software by working with OPTIMAL who has long term commitment to the **Garment Exports Industry**.
- Continuous upgradation of software keeps your I.T. systems at the technological forefront.
- Introduce tested business practices & operational procedures followed by industry leaders.

## Scalable Architecture of VisualGEMS :

**VisualGEMS** offers scalable architecture, which is easy to configure & implement. Scalability lets your Information Management System grow with your business & remain tuned to your current needs. The key Scalable parameters are :

1. Preference of starting with a basic modular configuration of Merchandising Management to a full fledged ERP Suite covering Merchandising, Shipment, Financial Accounting & a choice of add-on modules.
2. Start with an entry level 5 user license and grow up to enterprise wide 20, 30 or unlimited user licenses.
3. Start as single business location & upgrade to multiple business location.

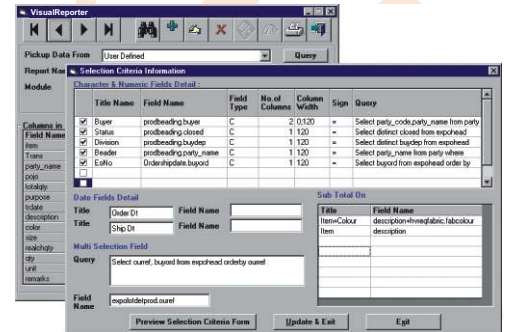
## VisualGEMS Configurations & Platforms :

Considering different organizational scope and sizes, and their varying needs, **VisualGEMS** is available in 3 different configurations :

- A. Professional Version** comes as a single-site solution for one business location with 5 / 10 / 15 or more user license. The professional version can run on Windows NT or Windows 2000 server and Windows 95 / 98 / 2000 / XP Clients. Minimum configuration required for the client platform is Pentium computer with 64 MB RAM and local hard disk.
- B. Enterprise Version** comes as a multiple business locations solution with 10 / 20 / 30 or more user licenses at each location. This solution is implemented with centralized database at the main location and online connectivity from remote business locations over leased lines or RF link or VPN or Internet.

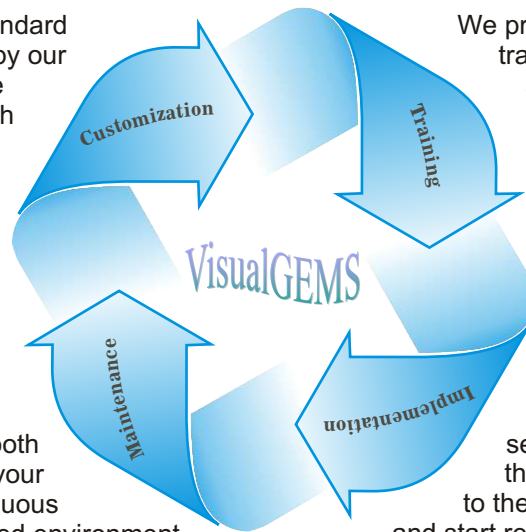
## Visual Reporter

- Provides designing & creation of customized reports.
- Reports creation facility is fully menu driven with "Access Permission" checks.
- End users can design Multi department reports themselves.



# Services

Your investments in the standard solution can be leveraged by our customization and software development services which covers addition of new reports and modules.



We provide exhaustive on-site training to users from each and every department to ensure that they get maximum value from VisualGEMS.

Our comprehensive Annual maintenance Contract (AMC) services ensures you to keep your software installation in smooth working condition & helps your organization to draw continuous benefits from the I.T. enabled environment.

Our implementation services include assisting the users to quickly adopt to the new system of working and start receiving valuable returns.

## About OPTIMAL :

OPTIMAL is a dynamic young organization engaged in promoting software products and services using latest technologies to wide spectrum of corporations for over 12 years. The quality & technology of the products reflect OPTIMAL's ability to produce and deliver world class software solutions.

OPTIMAL has identified Garment Exports segment As one of the thrust areas and has build up core competency in providing state-of-the-art ERP software and Web enabled applications. These applications are targeted to Garment Export Organizations, Apparel Buying Agencies, Textile & Made-ups Exporters.

OPTIMAL's extensive client domain knowledge and strong foundation in technology ensures delivery of better value from it's I.T. solutions.

OPTIMAL's strength is derived from the core team Of highly innovative, quality conscious & dedicated software team which is steered by an enterprising & professionally qualified management and also the ability of the team to listen to customers needs.

For a detailed company profile, visit :  
[Http://www.optimalindia.com](http://www.optimalindia.com)

### Corporate Office :

**OPTIMAL INFOTECH PVT. LTD.**  
302-303, Apollo Arcade, R. K. Singh Mag,  
Off Old Nagardas Road, Andheri (E),  
Mumbai 400 069, India.  
Tel : 91-22-28312976 / 77  
E-mail : [oipl@vsnl.com](mailto:oipl@vsnl.com)  
<http://www.visualgems.com>  
<http://www.optimalindia.com>

## Regional Offices:

### INDIA - South

238/A, 3rd Cross, 11th Main,  
4th Block, Koramangla,  
Bangalore - 560034,  
India.  
Tel – 080-51217008  
Mobile - 9845046980

### INDIA - North

K 8, 3rd Floor,  
Kalkaji,  
New Delhi – 110019,  
India.  
Mobile – 9350551494

### INDIA - West

301, Apollo Arcade,  
R.K. Singh Marg,  
Off Old Nagardas Road,  
Andheri(E),  
Mumbai - 400069,  
India, Tel – 91-22-28312976 / 77

