

# VisualGEMS

**ERP SOFTWARE**

**GARMENT EXPORT MANAGEMENT  
SYSTEM**

**VERSION 4.0.0.**

**PRODUCT MANUAL**

**DESIGNED & DEVELOPED BY**

**OPTIMAL INFOTECH PVT. LTD.**

404 - 407, Apollo Arcade,  
R.K.Singh Marg, Andheri(E)  
MUMBAI, BOMBAY 400069.

Tel : 91-22-28240976 / 77

**oipl@vsnl.com**  
**www.visualgems.com**  
**www.optimalindia.com**

# CONTENTS

1. VisualGEMS MARKETING & TECHNICAL SUPPORT OFFICES
2. A NEW DIMENSION TO INFORMATION MANAGEMENT
3. VisualGEMS – FEATURES
4. VisualGEMS - BLOCK DIAGRAMS
5. VisualGEMS – WORK FLOW DIAGRAMS
6. VisualGEMS - STANDARD MODULES AND SUB MODULES
7. VisualGEMS – ADD ON MODULES
8. VisualGEMS - INPUT DOCUMENTS REQUIRED BY VisualGEMS
9. VisualGEMS - OUTPUTS \ REPORTS GENERATED BY VisualGEMS
10. ANSWERS TO COMMON QUESTIONS
11. HARDWARE CONSIDERATIONS

## A NEW DIMENSION TO INFORMATION MANAGEMENT

### We Believe.....

- Your precious time should be spend in increasing sales then recording them...
- Business processing is far more important than data processing...
- Quality Control is more critical than inventory control...
- You should be spending time generating data rather than retrieving it...

In today's corporate world, computers are no longer a novelty. Companies are increasingly turning to information technology just to survive in business. To squeeze maximum benefit from the information technology revolution one must look at it in correct perspective. Computers can significantly improve efficiency and output only if an integrated, ON- LINE and multi-user ERP system is put into implementing quick decision in any office.

To put such a system into place, objectives of the organization have to be converted into a conscious working plan and then integrated with computerization. So that what is being done manually is accomplished through computer itself.

Since the productivity depends on man, material and quick decision making the integrated system focuses on cutting down information travel and decision making time. These factors will in turn translate into profits which can be measured qualitatively and quantitatively.

A conventional approach to computerization was using computers as processing units by feeding results of every action in batch mode and performing compilation.

ON-LINE integrated ERP systems that possess the capability to deliver potential productivity benefits differ from the conventional system approach where action itself is performed on computer.

Thus, instead of results of every action going into computer the file itself goes into computer. The manual file is completely taken over but the computer from the start of putting the basic information, endorsement, filtering of processing points, progress reporting, covering file movements between various departments \ staff till final decision is taken.

## VisualGEMS FEATURES

### ***FLEXIBLE ORGANIZATION :***

VisualGEMS has been designed keeping in mind the flexible working of the Garment industry. The functional breakup of the software has been organized to match with the distribution of Garment Export Organization into various departments or divisions viz:

<b>Export Management Purchase Management Early Warning System Sampling</b>	<b>International Marketing OR Merchandising Department</b>
<b>Inventory Control</b>	<b>Fabrics, Accessory (trims), Yarn, Garments &amp; General Material Store Department</b>
<b>Production Management Factory Management System Advance Production Planning</b>	<b>Factory</b>
<b>Export Shipment, Import &amp; EOU Management with Documentation</b>	<b>Shipment &amp; Import Documentation Department</b>
<b>Financial Accounting &amp; Export Finance</b>	<b>Accounts \ Finance Department</b>
<b>HR &amp; Payroll</b>	<b>Admin. Or Accounts Department</b>

### ***DATA CAPTURE :***

As information and its accuracy plays a key role in success of an Organization, VisualGEMS lays strong emphasis on data capture at a logical point of origin and share it at all other places of reference.

A strict validation of date being entered ensures accuracy as well as reliability. Thus, VisualGEMS offers an efficient environment of minimum data feeding efforts to generate

maximum value aided reports \ information. These reports are ideally targeted to serve the TOP management decision making requirements as well as record keeping on the operational front.

### ***USER FRIENDLY INTERFACE :***

The user interface offered by VisualGEMS is designed for non computer users. Menu driven facility throughout VisualGEMS not only encourages its users to work on VisualGEMS but actually keeps them glued to the system. Facility of ON-LINE referencing of master data and even related transaction data keeps the users free from pressures of remembering codes.

### ***ATTENTION TO DETAILS :***

VisualGEMS covers simple requirements which involve one-to-one tracking \ matching. But this may meet just 50 to 70% of your requirements. Users of VisualGEMS don't have to turn back to manual methods for rest of the complex requirements. VisualGEMS covers with same ease and smoothness most complex transactions as well. So when you and your Organization works on VisualGEMS you don't have to make any compromises.

### ***IMPLEMENTATION :***

Methodology of implementation of a software system \ package in an Organization is crucial to success of the task. Optimal identified this important area and used its vast experience in successfully handling installation phase.

Modularity of VisualGEMS is the result of OPTIMAL'S very strong belief that ***implementation needs have to be knitted into the design of software*** rather than making compromises at the time of usage, eventually delivering much less results than promised.

In VisualGEMS a module can be de-linked from the integrated system by simply setting the link off, enabling a step-by-step implementation and usage.

As the modular functioning is achieved links can be brought back into place to derive the ultimate benefit of integrated environment. For that matter depending upon the flexibility desired links can be enabled or disabled anytime without disturbing the underlying data.

### ***FLAWLESS INTEGRATION :***

Integrated design of VisualGEMS allows to establish and enhance inter-department communication within the organization which otherwise may become a major productivity bottleneck.

Compatibility of information \ data sharing needs between the various departments is built into VisualGEMS and is the major pay-off of the integrated environment.

### ***MIS - STRONG HOLD :***

Management Information Reporting has been a key thrust area in VisualGEMS. The facility offered by VisualGEMS to generate MIS reports is very simple and concise keeping in mind the high premium on time from the user of MIS reports.

VisualGEMS offers reporting methods which are very simple to use and do not require entering of codes or typing of text. Simply point, choose & click is the philosophy of report generation.

Getting the reports through the secretary is a thing of past. Now C.E.O. & Managers can have terminal on their desk top and while they speak to buyers on phone latest data can be flashed on the screen to answer position on production or shipment or pricing.

A regular update of information in VisualGEMS shall enable Manager to predict the course of action well in advance and take corrective actions if necessary. This is a significant drift of VisualGEMS from several others software which serve to work as *post facto* data compilation tool.

Enhancement of VisualGEMS in making it more and more powerful as a ***Decision Support Tool*** shall be the top most objectives of architects of VisualGEMS.

## ***ON-LINE INFORMATION PROCESSING :***

ON - LINE system are common place. But rarely any software encapsulates itself against the pitfalls arising out of superficially incorporated ON - LINE features. VisualGEMS has built in capabilities to maintain data in most natural form and using specially developed algorithms produce the ON-LINE information wherever desired. Thus 100% reliability of all the processed information is guaranteed in VisualGEMS.

## ***SIMPLICITY OF USE :***

The simplicity of VisualGEMS lets user enter data using his \ her common sense. Intuitively designed steps (menus) allow users to handle VisualGEMS smoothly without needing any guidance. Thus 80 % of VisualGEMS can be mastered in 20 % of time & efforts while remaining 20 % can be learnt in balance 80 % of time & efforts.

## ***TEMPLATE TECHNOLOGY :***

In spite of being a standard software package, VisualGEMS can be customized \ tailored to suit your specific requirements by using powerful **template technology**. User definable templates of vouchers & shipment documents can be flexibly used to meet specific needs of your document formats. Besides, documents such as Purchase Orders, Challans, Job Orders, etc. can be customized in the report format right at your site.

## ***DIAGNOSTIC & AUTO RECOVERY :***

In our endeavor to make VisualGEMS a friendly tool for common users & not a research tool for computer experts we have visualized every possibility abnormality which can occur in the usage of VisualGEMS. Automatic recovery & self correcting from such abnormalities keeps the up-time of VisualGEMS close to 100% without needing support. Automatic re-creation of VisualGEMS system files (on getting corrupted or deleted), integrity check on data files & recovery of corrupted data, updating of data structures to match the latest release of



VisualGEMS, automatic creation of new data files required by new modules or existing modules, error logging, etc are some of the built-in features of VisualGEMS which make VisualGEMS & the information contained therein as reliable as your “mind”.

### ***IMPROVED REPORTING :***

No Job is complete till paper work is done ! No one understand this better than Garment Exporters. Every shipment, big or small, demands endless documents generation. Obviously, VisualGEMS puts an end to all this drudgery.

Document generation in VisualGEMS is just a matter of minutes. But it is least of the reasons why VisualGEMS should be used. There are other pay-offs as well :

- # No dependence on expert manpower to produce documents.
- # High quality of output documents.
- # MIS reporting possible on documents generated.
- # Work can be carried on without obstructions or absenteeism.
- # No lead time required to gather data for compilation / tabulation. Instant retrieval of data and printing in desired formats is possible.

### ***VisualGEMS - A CATALYST IN GROWTH :***

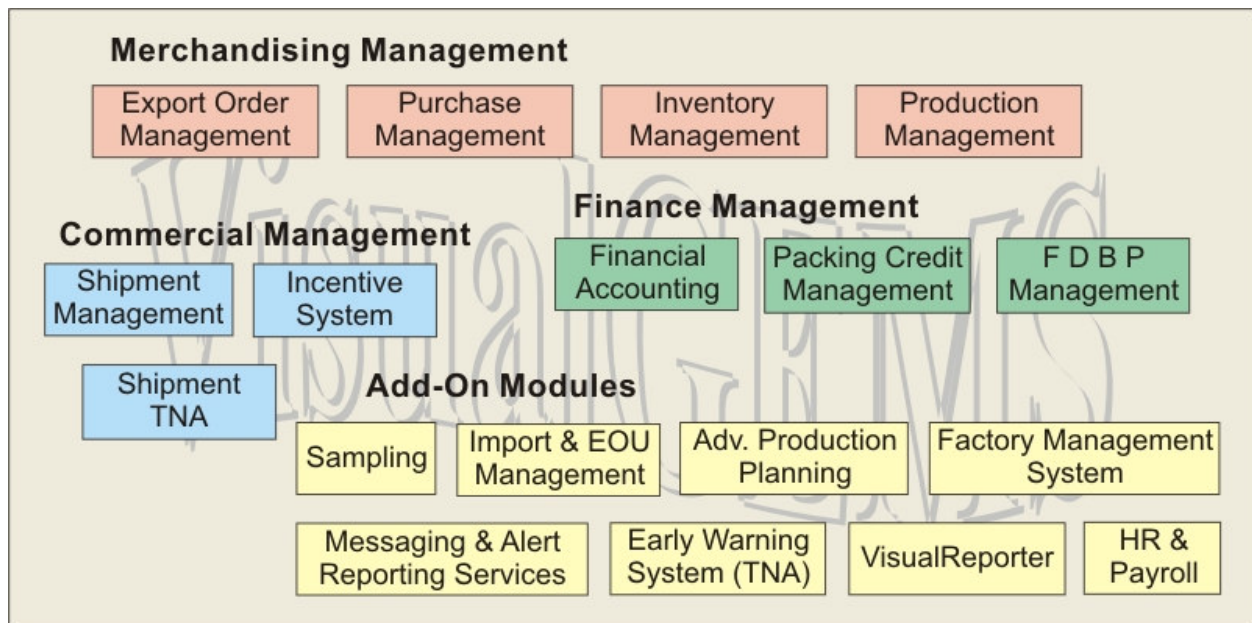
VisualGEMS has been designed to let you start small (one module) yet reach total automation in record time. VisualGEMS actually accelerates the growth of your business by helping in effective utilization of valuable resources. For the users of VisualGEMS blocked funds (bank guarantees, EMDs), stuck inventories (fabric, accessories, garments), under utilized production capabilities, unproductive use of manpower etc. are all things of past !

## ***FUTURE WITH VisualGEMS :***

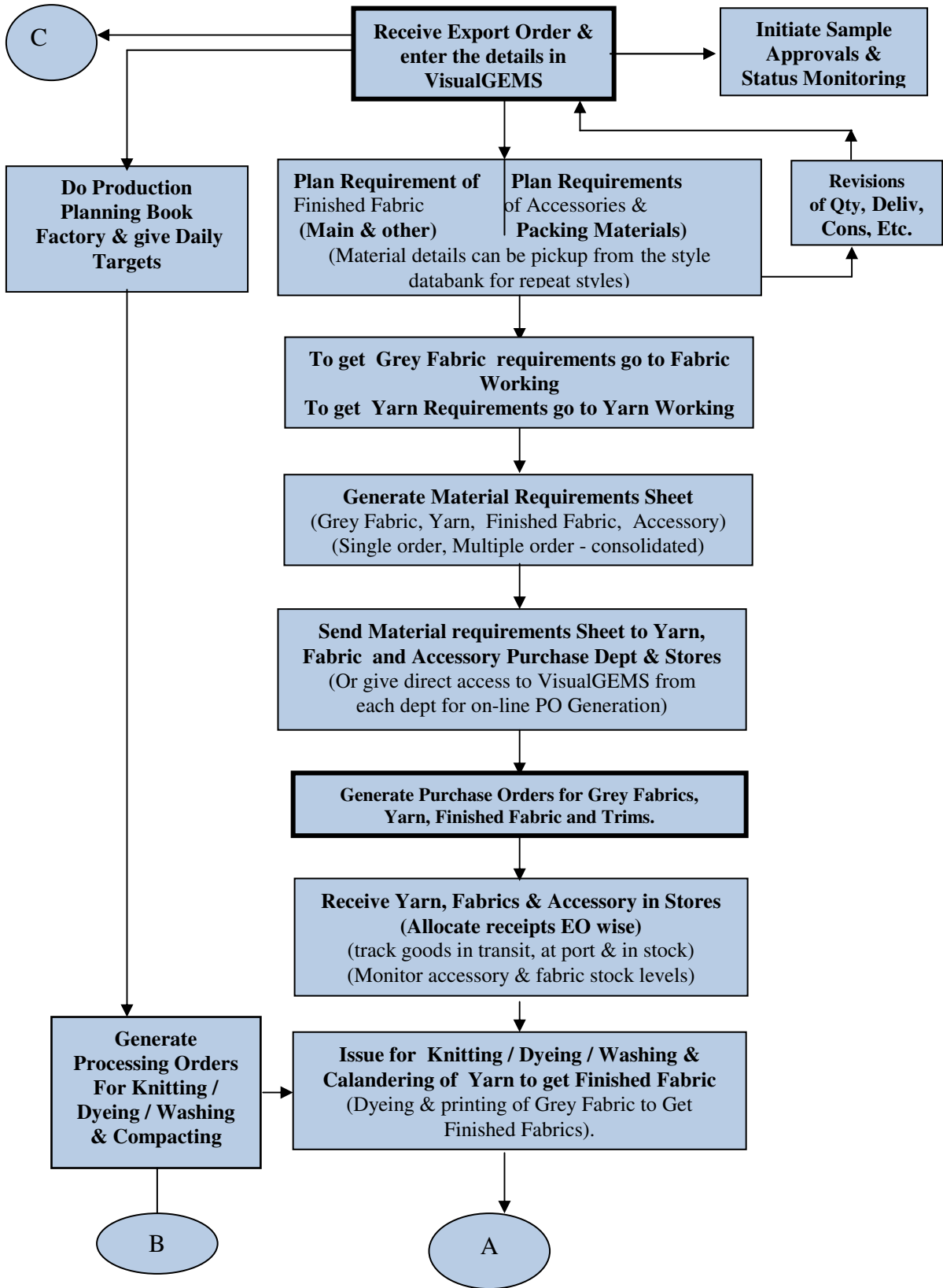
VisualGEMS has been designed to meet your present needs and be flexible enough to accommodate new requirements. Its open architecture allows quick expansion even by end users who have programming knowledge.

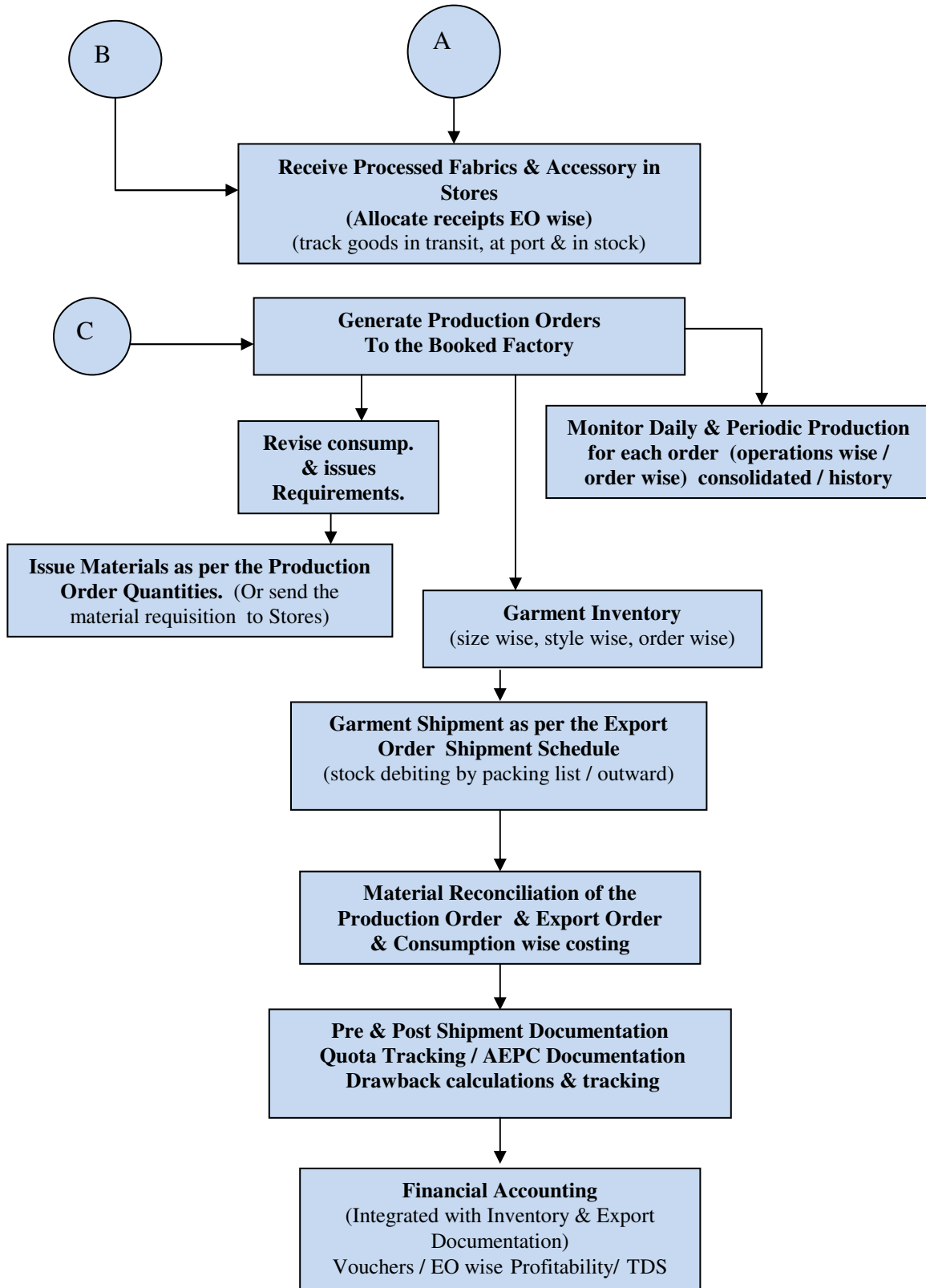
VisualGEMS prepares your organization for future office environments such as Electronic Mail, EDI (Electronic Document Interchange) and eventually paper-less office of the 21st century.

### **VisualGEMS FUNCTIONAL BLOCK DIAGRAM**

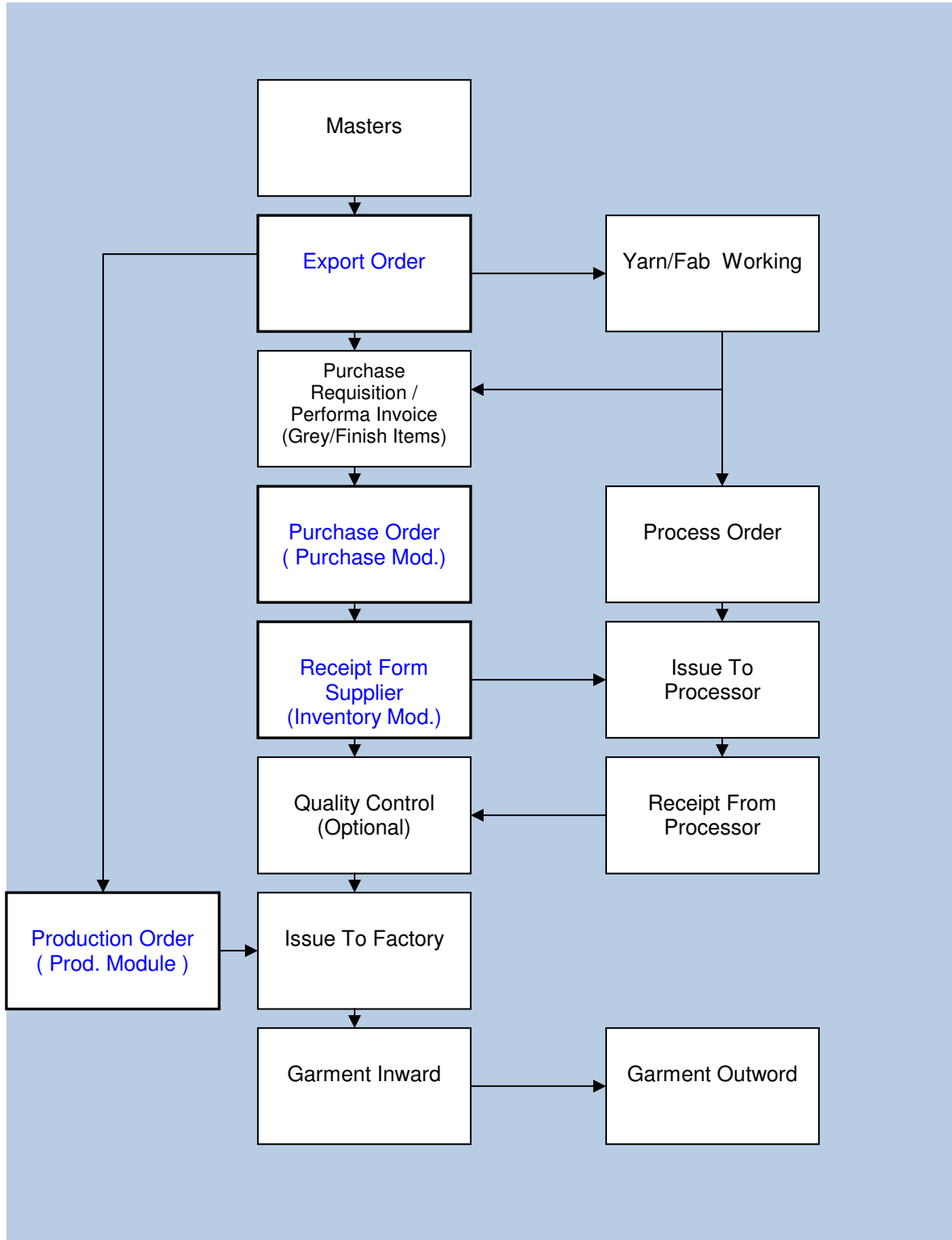


# VisualGEMS WORKFLOW DIAGRAM

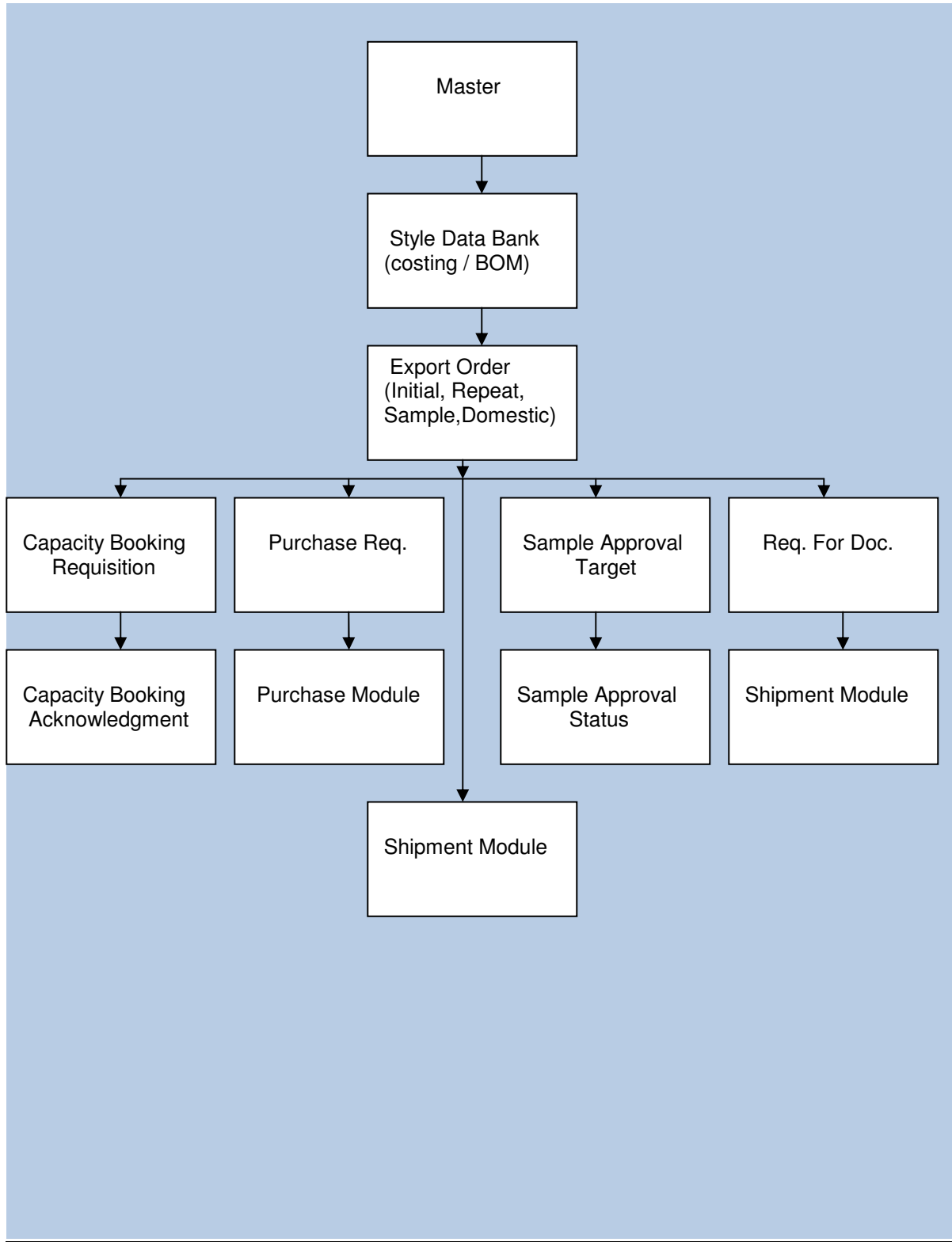




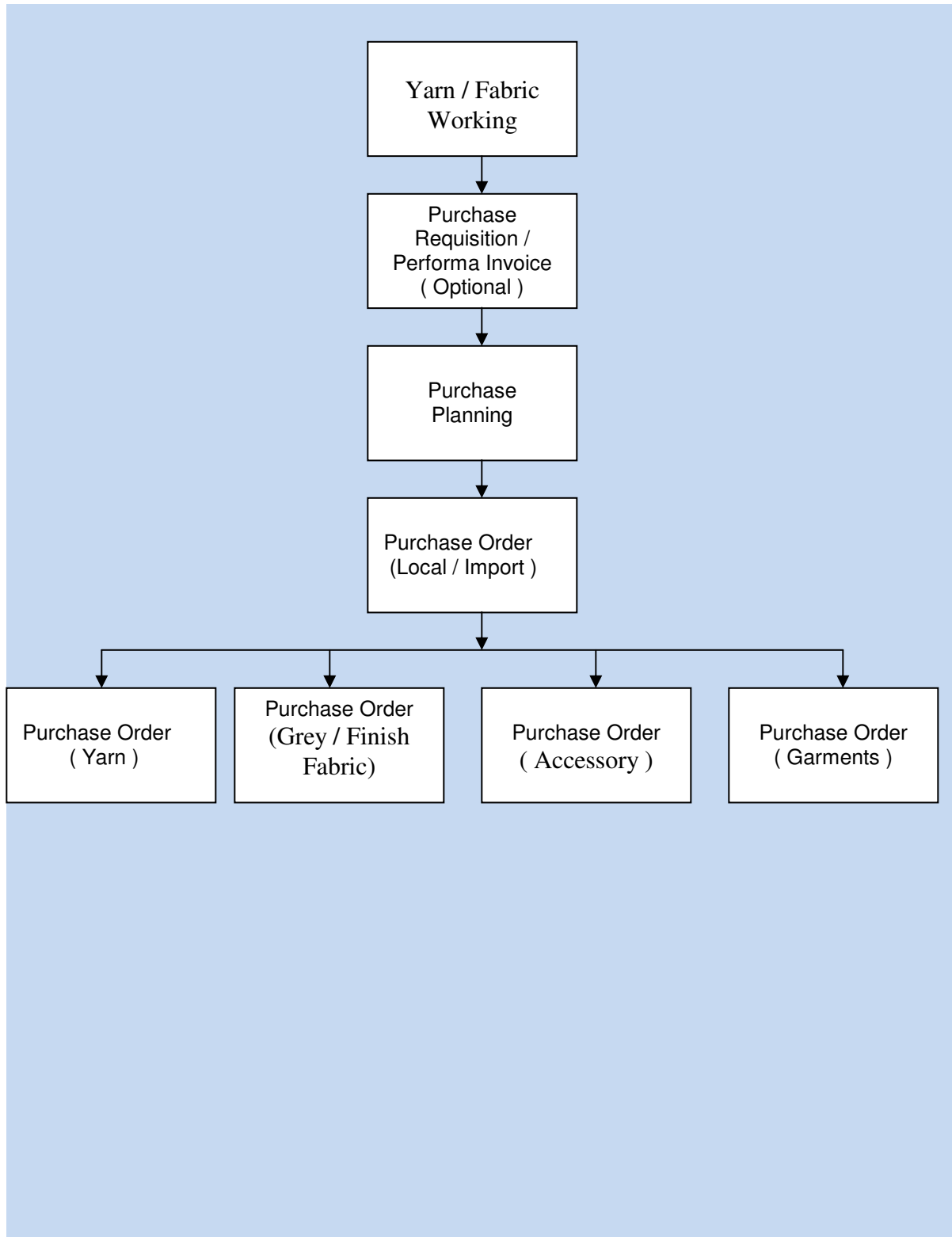
## Merchandising – Purchase – Inventory – Production



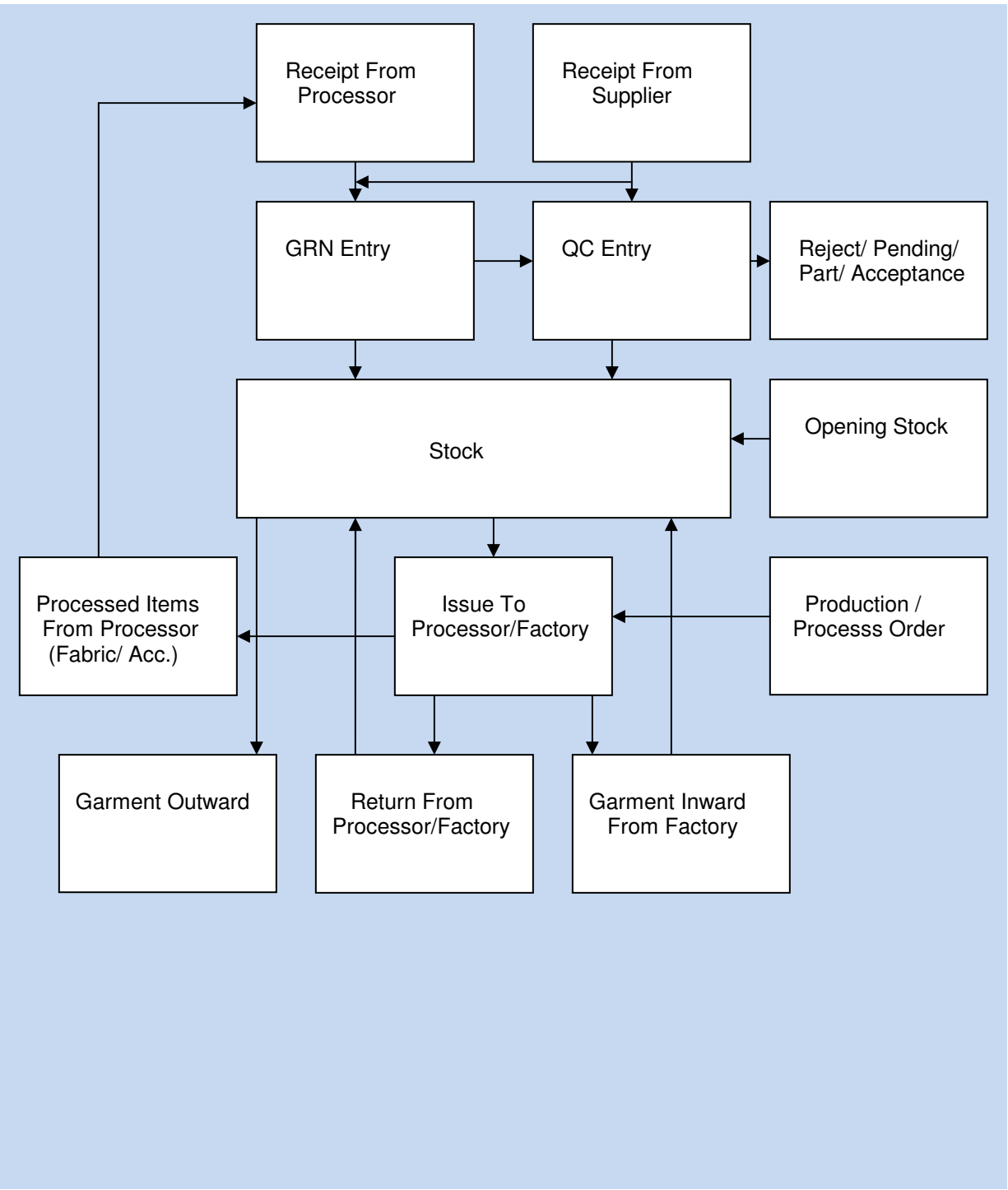
## EXPORT ORDER MODULE



## PURCHASE ORDER MODULE

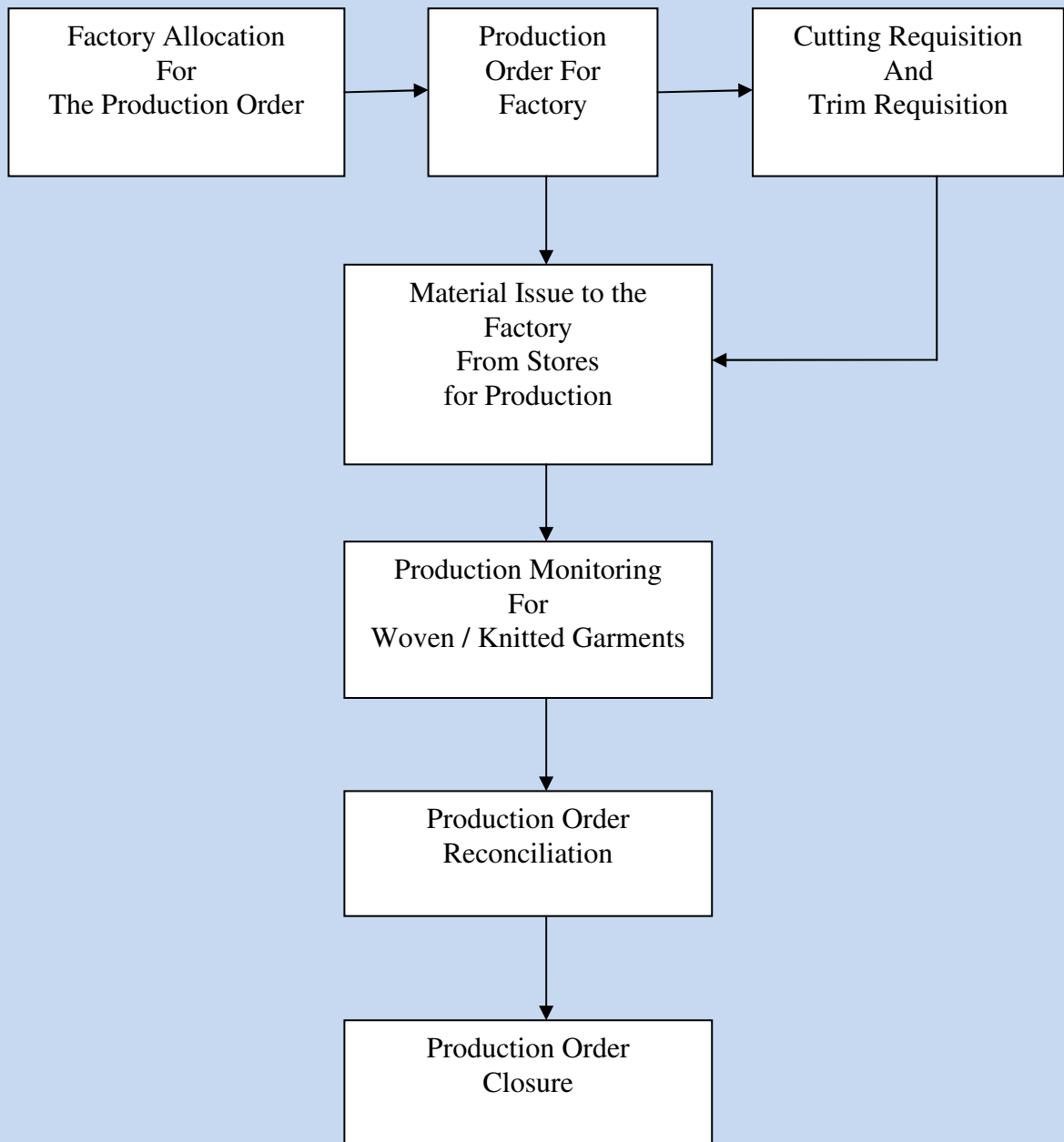


## INVENTORY MODULE





## Production Module



## **STANDARD MODULES & SUB MODULES OF VisualGEMS**

VisualGEMS offers following *standard* modules which can be configured to work in an *integrated fashion*.

### **Merchandising Management:**

- ◆ EXPORT ORDER MANAGEMENT
- ◆ PURCHASE ORDER MANAGEMENT
- ◆ INVENTORY MANAGEMENT
- ◆ PRODUCTION MANAGEMENT

### **Commercial Management:**

- ◆ EXPORT SHIPMENT MANAGEMENT
- ◆ IMPORT & EOU MANAGEMENT
- ◆ SHIPMENT TNA
- ◆ EXPORT INCENTIVES

### **Financial Management:**

- ◆ FINANCIAL ACCOUNTING
- ◆ EXPORT FINANCE

Each of the modules is further divided into sub-modules \ programs which are listed below:

#### **1. EXPORT ORDER MANAGEMENT**

- 
- Style Databank (summary, BOM, Style Costing)
- Export Order Details Entry (Summary, Details, BOM, Costing)
- Capacity Booking Requisition (CBR)
- Attach Scan Docs
- Email Notification
- Factory Allocation

- Sample Approval Targets
- Sample Approval Status
- Sample Dispatch
  
- Material Requisition (Fabric/Accessory/ General Goods / Sample / Stock)
- Purchase Requisition (Fabric/Accessory/Yarn/General Goods)
- Requisition for Shipment Documentation
  
- Standard Measurement Charts
- Order Wise Measurement Chart
- Costing Templates
  
- Style Locking
- EO Locking / Closure
- CBR Locking / Closure
- EO BOM Approval
- Material Requisition Locking / Closure - Accessory / Fabric
- Purchase Requisition Locking / Closure - Accessory / Fabric / Trim / General Goods
  
- Barcodes
  - Generate Barcodes – (EO Wise)
  - Print Barcodes (EO Wise)
  - Print Barcodes (Style Wise)
  
- Generate Style Catalogue

## **2. PURCHASE MANAGEMENT**

- Purchase Planning (Fabric / Accessory)
- Advanced Accessory Working
- Fabric / Yarn Working
  
- Performa Invoice (Fabric/Accessory / General Goods)
  
- Purchase Orders (Accessory / Fabric / Yarn / Garments / General Goods)
- Purchase Order Revision (Accessory / Fabric / Yarn)
- Purchase Order Confirmation (Accessory / Fabric / Yarn)
- Purchase Order Locking / Closure (Accessory / Fabric / Yarn / General Goods)
- PO Cancelation (Accessory / Fabric / Yarn / Garments / General Goods)

- PI Closure (Accessory / Fabric / General Goods)
- PO Data Template.

### 3. INVENTORY MANAGEMENT

- Change Inventory Year
- Accessories / Trims
  - Receipts – From Supplier / Buyer / Processor
  - Returns – To Supplier /To Buyer / From Factory / From Processor/ Sale Return- Local / Export.
  - Issues – To Factory / To Processor / Against M R – Acc. / Fab. / Yarn
  - Sales – Local / Export
- Grey / Finish Fabric
  - Receipts – From Supplier / Buyer / Processor
  - Returns – To Supplier /To Buyer /From Factory /From Processor / Sale Return- Local / Export
  - Issues – To Factory / To Processor / Against M R – Acc. / Fab. / Yarn
  - Sales – Local / Export
- Yarn
  - Receipts – From Supplier / Buyer / Processor
  - Returns – To Supplier/To Buyer / From Factory / From Processor/ Sale Return- Local
  - Issues – To Factory / To Processor
  - Sales – Local / Export
- Garments
  - Receipts – From Factory / From Buyer / From Supplier
  - Outwards – For Processing / For Export Sales / For Local Sale / Sample / Factory Packing List
  - Return – From Buyer / From Factory / To Supplier
- Gate Pass Entry – Inward / Outward
- General Goods
  - Receipt – From Supplier / From Processor
  - General Issue
  - General Returns
  - General Local Sales

- Bill Entry - Accessory / Fabric / Yarn / General Goods / Garments
- Stock Verification (Accessory / Fabric/ Yarn /General Goods / Garments)
- Stock Transfer
  - Across Location (Fabric / Accessory/Yarn /General Goods)
  - Within Location (Fabric / Accessory/Yarn /General Goods)
  - Branch Outward (Fabric / Accessory/ Yarn /General Goods /Garments)
  - Branch Inward (Fabric / Accessory/ Yarn /General Goods/ Garments)
  - Bulk order Transfer (Fabric / Accessory)
  - Across Company
- Stock Adjustments
- Stock Revaluation
- Issue Control Center
- Close Unbilled GRN's (Fabric / Accessory/ Yarn /General Goods/ Garments)
- Form 31 Issue
- QC Unlock
- Opening Stock
  - Accessory / Fabric / Yarn / Garments / General Goods

#### **4. PRODUCTION MANAGEMENT**

- Production Planning
- Capacity Booking Acknowledgement
- Production Orders
- Processing Orders
- Requisition for Trims / Cutting / Yarn
- Supplementary requisition
- Import Monitoring data
- Production Monitoring Knitted / Woven / Sweater /Madeups
- Export Order Wise Production Order Reconciliation
- Production Order Reconciliation
  - Updated Actual Consumption Against Production
  - Production Order GRN Reconciliation (New)

- Process Order Reconciliation
- Process Order GRN Reconciliation
  
- Production Order Closure
- Processing Order Closure
- Issue Requisition Closure (Trims / Cutting / Yarn)
  
- Production Order Cancellation
- Processing Order Cancellation
  
- Production Monitoring Report Set Up
  
- Production Masters
  - Operations
  - Operation Groups
  - Production Order Types
  - Panel
  - Process Types
  - Production Sequences

## **5. EXPORT SHIPMENT MANAGEMENT**

- Change Shipment Year
  
- Shipment Setup
  
- Performa Invoice
- Letter Of Credit
  - Export L/C
  - L/C Transfer
  
- Pre Shipment Documentation
  - Shipping Marks
  - Export Invoicing (Order Wise)
  - Master Document - I
  - Special Custom Invoice (U.S. Visa)
  - Carton Wise Packing List
  - Vendor Declaration Form
  - Bill Of Lading \ AWB \ CTD Details
  - Annexures Printing (I, IX, XII, TC)

- Post Shipment Documentation
  - Export Invoicing (Order wise)
  - Commercial Invoice
  - Packing List
  - Bill Of Exchange \ Draft
  - Bank Certificate (Single Invoice / Multi Invoice)
  - Bank Covering Letter
  - Certificate of Origin
  - G.S.P.
  
- Incentive System
  - Drawback / DEPB Products Master
  - Drawback Receipts
  - DEPB Claim / Sale
  - Incentive Recalculation Tool
  
- Shipment TNA
  - TNA Setup
  - User Profile
  - Activity Master
  - TNA Template
  - Pre Shipment Template
  - Post Shipment Template
  - Document Status Report
  - Update TNA Activity
  
- Update Invoice
  - Shipping Bill Details
  - DBK Details
  - Other Charges

## **6. IMPORT & EOU MANAGEMENT**

- Masters
  - CHA
  - Forwarders
  - Insurance Policy Master
  - L/C Clause Master
  - Import L/C Limit
  - EPCG License

- AEPC Import License
  - Advance License Registration
  - License Status Master
  - Payment Terms
- 
- Performa Invoice
  - Import Register
  - Purchase Orders
- 
- Import L/C Requisition
  - Import L/C
  - Advance Payment Requisition
  - Advance Payment
  - Requisition For Release Order
  - BE Submission
- 
- Freight Paid Entry
  - DP (Payment on Arrival)
  - Duty Paid Entry
  - Clearing Agent Bill
  - Courier Expenses
  - Attach Performa Invoice to License
  - Attach Shipment Invoice to License
- 
- Import Register Closure
  - Import L/C Closure
- 
- EOU
    - Bond Master
    - CT3
    - ARE 3
    - Procurement Certificate
    - Re-warehousing Certificate
    - Issue Application
    - Consumption Certificate



## 7. FINANCIAL ACCOUNTING

- Startup
  - Select Company
  - Change Years
  - Financial Years
  - User Defined Books
  - Setup (general, Voucher, Voucher Numbering, TDS, Inventory Link)
  - Multicolumn Setup
  - Cheque Printing Setup
  
- Masters
  - Chart Of Account
  - Miscellaneous Charges
  - PO Other Charges Link
  - Item Master
  - Budget Allocation
  - TDS Master
  - TDS Rates
  - Concessional TDS Master
  - Sale / Purchase Forms
  - Cheque Book Master
  - Cheque Cancalation
  - Cost Category
  - Cost Center
  - Item Opening Stock
  - Location Level Lock
  - Voucher Approval Master
  
- Voucher Entry
  - Bank Payment / Bank Receipt
  - Cash payment / Cash Receipt
  - Contra
  - Journal
  - Debit Note / Credit Note
  - Credit Expense
  - Purchase
  - Purchase Return
  - Local Sales
  - Export Sales
  - Sales Return

- TDS Payment
- Exchange Rate Gain / Loss wizard
  
- Generate TDS certificate nos.
- ETDS Acknowledgement
- Closing Stock
- Voucher Approval
- Payment Requisition
- C Form Entry
  
- Export Finance
  - Inward Remittance
  - Packing Credit (PCL)
    - Setup
    - Entry Re-payment / Interest
    - Quarterly Interest
    - PCL Register
  
  - Forward Booking Contract
  
  - Foreign Document Bill Purchase (FDBP)
    - Setup
    - Purchase
    - Crystallisation
    - Collection
    - Realization
    - Register
    - Site status Report
  
  - Forward Booking Report.
  - Inward Remittance Register
  
- Maintenance
  - Printer Setup
  - User Information
  - Show Active Users
  - Audit Trail

- Tools
  - Diagnostic Tool
  - Voucher Mismatch Detection
  - A/C wise Trial Balance Differences
  - Style Update Tool
  - Update Group Balances
  - Carry Forward Balances
  - Difference in Matching
  - Re-Numbering Books
  - Across Company Balance Transfer.
  
- View VGEMS.INF File
- Site Status Report
- Voucher Status Report

## SUPPORTING MODULES & SUB MODULES OF VisualGEMS

- 1. ADMINISTRATION (Admin)**
- 2. MASTERS**
- 3. SERVICES**

These modules are included with the standard version of VisualGEMS.

### **1. ADMIN**

- Global Setup
- Approval Setup
- Back data Entry
- Printer Setup
  
- User Creation
- User Access Permissions

- Copy Access permissions
- User Information
- Change Business Location
- Unlock Transaction
- Show Active Users
- Copy Users
- Site Status Report
- Audit Trail
- Tools
  - Update BOM
  - Update P.O. From Inventory
  - Update Monthly Balance
  - Change Style Number
  - Change Style Color
  - Change Item Color
  - Change Item Size
  - Change Item
  - Update Item Rate in Master
  - Carry Forward Stocks
  - Carry Forward Rates
  - Our Ref Finder.
  - Update Inventory For Multi PO GRN
  - One Time Tools
  - Update Garment Monthly Balance
  - Data Mismatch
  - Party Replace Tool
  - Query Analyzer.
- Database Utilities
  - Trim Database
  - Restore Database.
- SMTP Configuration
- Report Writer
- View “INF” file Settings

## **2. MASTERS**

- Companies / Countries / Cities
- State / Province
- Business Locations
- Branch
- Stock Locations
- Currencies / Daily Currency

- Banks
- Units Of Measurement
- Quota Categories
- HS Code
- Ports
- Payment Terms
  
- Parties
  - Buyers / Agents / Suppliers / Factories / Processors / Other Parties / Contractor / Courier / Forwarders
- Buyer Approved Factory
- Buyer Wise Users
  
- Items
  - Item Groups / Item Categories / Quality
  - Fabrics / Accessories / Yarn / Finished Goods / General Goods
- Size Series
- Sample Type
- Seasons
- Colours
- Size
- Other Charges
  
- Employees
  - Branches / Departments / Categories / Shifts / Grades / Designations

## ADD ON MODULES OF VisualGEMS

VisualGEMS offers following Add-On Modules to choose from:

- 1. MESSAGING & ALERT REPORTING SERVICES**
- 2. EARLY WARNING SYSTEM (Advance TNA)**
- 3. ADVANCE PRODUCTION PLANNING (APP)**
- 4. SAMPLING**
- 5. FMS - FACTORY MANAGEMENT SYSTEM**
- 6. VisualPAY – ATTENDANCE, PAYROLL & HR MODULE**
- 7. VisualReporter – REPORT DESIGNING TOOL**

### **1. MESSAGING & ALERT REPORTING SERVICES:**

- VisualGEMS caters to wide range of information which is continuously being created in the Garment Export organization / Factory. Most of this of this information is of sensitive nature & requires immediate attention of the operational / management persons.
- Alert services cater to the needs of critical information monitoring & reporting. There are predefined kind of alerts which are provided within VisualGEMS.
- VisualGEMS users can configure inter-user communication functionality within VisualGEMS by using this Module. Messaging service allows the VisualGEMS users to compose, send & receive structured message to & from each other.
- A log of the messages is maintained for later viewing & printing. The messages are queued into the log after the recipient views them. The recipient gets a message flash on the screen whenever a message arrives. If the message is not viewed at that moment that it is flashed again after some time interval.
- If the recipient of the message is not logged in VisualGEMS than the message remains in the queue & flashed whenever the user logs in VisualGEMS.
- User “Groups” can also be formed to facilitate group communications.
- Event Notification or “Rule Based Communication” is another facility offered by this module. Users can configure recipients (individuals & groups) of messages arriving due to occurrence of certain important events which are recorded in VisualGEMS. Some example of these events is: Creation of a new Export Order, Editing of an existing Export Order, Initiation of a Purchase Order, Opening of an Export L/C, etc.
- A broadcast facility is also available for quick sending of any messages to all users. But these messages are not queued & are dispatched to active users only.

## 2. EARLY WARNING SYSTEM (Advance TNA)

- Critical activities of each Export Order can be combined together to form a “Time & Action Calendar” or a “Critical Path” which has to be tracked during the life time of the Export Order.
- The status of an activity can be communicated to the email box of the individual recipient.
- AutoTNA Module is integrated with Main VisualGEMS ERP.
- Auto TNA allows to create Activities (events) for Sample Approvals, Fabric & Accessory Purchase, Receipt & Issues, Production, etc.
- Most of the activities can be Auto Updated by the VG Transactions such as PO, GRN, Issue etc. e.g. If PO for Fabric is prepared in VG, the “PO for Yarn” Activity will be marked as "Completed" automatically.
- Linking of VG Transactions to TNA activities is flexible & can be done by user from simple & easy to use Interface provided.
- Activity Completion can be defined on percentage (%) basis. e.g. if 50% of required fabric is ordered then the Activity is marked as “In Progress” & Percentage is shown as 50%.
- User configured % to mark Activity Completion status as “Done” e.g. you can configure to say that as soon as 97% Fabric is received in-house then mark the “Fabric IN house” activity as complete (Done).
- User can View the TNA status of Orders on a graphical DASHBOARD. Color coded Graphical TNA Dashboard highlights the problem areas.
- Drill Down from DashBoard to view details of actual Qty e.g. Suppose the Fabric "in house" is showing 50% complete, By Double Clicking on Fabric "In house" activity cell, you can see color wise/ size wise details of Qty required, Ordered, received etc.
- Auto TNA generates Alert Email based Reminders for Due, Delayed & Crisis Activities with Escalation facility. These emails are filtered buyer wise.
- Email reminders can be configured for activities which are due in next 2/3 days & can be send to people who are directly responsible for the activity completion.
- Auto Escalation of Email Reminders for delayed Events, to Senior Management thus exposing only crisis Reminders to Top Management.

## TNA Activities Mapping to Transactions For Auto Updation

Main Category	VG Transaction Mapping	Sr No
Order Confirmed	EO	1
BOM Complete/Approved	EO	2
Item Approved for Purchase	EO	3
Capacity Booking	CBR	4
Purchase Requisition	PR	5
Accessory Working	AYW	6
Yarn/Fabric Working	YFW	7
Purchase Order	PO	8
Process Order-Fab/Yarn	PRO	9
Process Order-Accessory	PRO	10
Issue to Processor-Fab/Yarn	PROISS	11
Issue to Processor-Accessory	PROISS	12
Receipt from Processor-Fab/Yarn	PROGRN	13
Receipt from Processor-Accessory	PROGRN	14
Receipt from Supplier	POGRN	15
Receipt from Processor-QC	PROQC	16
Receipt from Supplier-QC	POQC	17
Production Order	PROD	18
Issue To Factory	PRODISS	19
Garment Inward from Factory	PRODGRN	20
Garment Issue for Process	GARISS	21
Garment Out for Sale	GARSALE	22
Production Monitoring	PRODMON	23
Sample Approved	SMPAPPRV	24
Sample Sent	SMPSENT	25
Pre Shipment Invoice	PREINVOICE	26
Pre Shipment Packing List	PREPACK	27
Bill of Lading	BL	28
Post Shipment Invoice	POSINVOICE	29
Post Shipment Packing List	POSTPACK	30
Bank Certificate	POSTBANK	31



### **3. ADVANCE PRODUCTION PLANNING (APP)**

The objective of Advance Production Planning module is to facilitate detailed & accurate working of factory capacity calculations & subsequently booking the export orders to match the available factory capacities.

The Advance Production Planning Module works on the principle which can be defined in 3 steps:

#### **Step 1 : Define Capacity :**

Defining Monthly Capacity of all your factories in STANDARD UNITS (PCS). Consider factors such as efficiency, holidays, working hours, O.T., etc. (For each factory you have to define number of lines & total no of machines).

#### **Step 2: Allocate Orders / Utilize Capacity:**

Every new order is allocated on a suitable factory / line based on its ship date or PCD. It warns for machine shortage - overlaps etc.

Reschedule a style for increase/decrease in qty, change in delivery date, impact from other styles, etc.

#### **Step 3 : Monitor Utilization / Balance Capacity:**

Using Line wise \ Factory wise Graphical Charts (digital charts) and Tabulated reports to view line allocations \ free slots \ over laps.

The above requires substantial data entry & manually defining "Complexicity Factor" for each style. This complexity Factor helps in calculating STANDARD QTY of the order while allocation.

#### **Step 4: Re-schedule the Allocated Orders:**

APP Supports following types of rescheduling:-

- a. Pre-pone / Post-pone only
- b. Pre-pone / Post-pone only with auto shuffle
- c. Extend
- d. Shift to Other Line
- e. Shift to Other Factory
- f. Split the Plan

#### **The key features of Advance Production Planning are :**

- Factory capacity & Export Order quantities are converted to standard units so that they can be compared.
- Factory capacity calculations are done using very flexible set of parameters such as – no of machines, working days in a month, holidays, Extra working hours, efficiency, etc.
- Allocation of export orders to factory is done based on one of these criteria's – no. of machines you want to allocate, no of days in which full output is needed or expected output per day.
- Reports available are :
  - Capacity Calculations
  - Capacity V/S Allocations
  - Monthly Charts
  - Daily Factory Bookings

#### **4. VisualPAY – Payroll & HR Module**

##### **Modules**

1. Attendance
2. Pay Roll
3. H.R.Database.
4. Over Time
5. P.F. / ESIC
6. Leaves & Over Time Management
7. Bonus & Gratuity
8. Loan Tracking
9. Buyer Compliance data
10. Off Roll Employees
11. Attendance Incentive
12. Separate Employee Module

### **Main features of VisualPay Module:**

1. It can read Employee (In / Out) punch card data from any ATR device.
2. It provides facility of printing Employee ID cards with Barcode facility.
3. It covers employee attendance, salary or wages & over time management.
4. It covers Employee H.R. Records history data covering - Qualifications, Employment history, Appraisals, Transfers etc.
5. It covers all statutory reports for PF & ESIC.
6. It covers user defined employee leaves management
7. It covers O.D. (outside duty) management.
8. It provides User Defined report generation facility to create unlimited reports.
9. It provides email based Work flow system of Leave Application approvals.
10. It has an OPTIONAL "Employee Module" using which each employee can monitor their attendance, leaves, O.T., Salary & even print Pay Slips right on their desktop with full confidentiality.
11. It supports Multi company Multi Location employee data.

### **Additional Features available in the Payroll & HR Module:-**

- Multi-location Attendance capturing from multiple ATR Devices.
- Attendance based Reports (absents, late coming, early going, etc.)
- Multiple Type of Leaves & out Door Duty Management
- Multi Location Holidays Management
- Multi Location attendance & Pay Roll Processing
- Over Time (4 types of OT rates)
- Attendance Incentives
- User definable Salary Heads
- PF & ESIC Compliance
- Gratuity Calculations
- Bonus Calculations
- Full & Final Settlement
- Loan Tracking & automatic Deductions
- Issuing of Memos to Employees
- Increments & Appears Management
- Employ H.R. Information
  - Qualifications
  - Promotion & Transfer History
  - Appraisals Recording.
  - Employment History
- Reminder Reports for Confirmation, Birthdays, Anniversaries, etc.

- Reports for tracking validity of passports, licenses, VISA, etc.
- Facility of printing Employee I.D. Card with Barcodes.
- User defined Reporting Tool to create unlimited Detailed & Summary Reports
- Salary payments by chq, transfer or cash.

**Password Protected "Employee Module" for –**

- Making Leave / OD applications with email based notification to Approving Manager.
- Approval of leaves & OD applications with email notification to applicant.
- Viewing Daily Attendance Status
- Viewing of O.T. status
- Viewing / Printing of salary slips

## **INPUT DOCUMENTS (DATA) REQUIRED BY VisualGEMS**

### **EXPORT ORDERS MANAGEMENT MODULE**

1. Export Order Sheet / Contract Sheet / Telex or FAX intimation of confirmed Export Order.
2. Measurement Chart (optional)
3. Fabric, Accessory & Yarn consumption details for the style of E.O.
4. Revisions in E.O. (telex/fax messages. or new E.O. Sheet)

### **PURCHASE ORDERS MANAGEMENT MODULE**

1. Fabric, Accessory & Yarn purchase requisitions (rough P.O.)  
Export order wise (including details - item name, colour, quantity, Rate, supplier, delivery location and delivery date).

### **INVENTORY (STOCKS) MANAGEMENT MODULE**

1. Inward Challans (fabric & accessory delivery challan) - P.O. wise
2. Lorry Receipt \ Transport Document \ Supplier Advice note
3. Rejection challans (outward challans) - against Receipts
4. Outward challans \ Issue requisitions - against Production Order \ Job Work Order \ Processing Order.
5. Garment Delivery challan - against Production Order \ Job Work Order

### **PRODUCTION MANAGEMENT MODULE**

1. Production Order \ Job Work Order requisitions (rough Job Work Order) E.O. wise (including details of – factory/Job worker, colour size details, delivery date, consumption).
2. Periodic Production Monitoring Reports from factories
3. Job Work reconciliation report from job worker.
4. Processing Order requisition (rough processing Order) (optional)

## **FINANCIAL ACCOUNTING MODULE**

1. Cash \ Petty Cash vouchers
2. Bank Voucher (cheque book counter foil, pay-in slips, Advises, Demand draft. (receipt vouchers to mention Invoice number) (payment vouchers to mention Bill number)
3. Debit \ Credit Note Vouchers
4. Journal Voucher
5. Purchase Bills (to mention our P.O. number)
6. Sales invoices (rough) (to mention E.O. number)

## **SHIPMENT MANAGEMENT MODULE**

1. Rough Invoice \ Performa Invoice (Master document I)
2. Packing details (from production dept)
3. Certified copy of the Shipping Bill
4. Bill of Lading
5. Bank Certificate after realization.
6. Letter of Credit (order wise or open)
7. Bank Guarantees
8. B.G. release Details (proof of shipment)
9. Daily currency Quotes from RBI

# OUTPUTS (REPORTS & DOCUMENTS) GENERATED BY VisualGEMS

## EXPORT ORDERS MANAGEMENT

### *Documents*

Export Order Sales Confirmation Sheet

- with Sketch / Without Sketch
- horizontal / Vertical Format
- Packing General / Embroidery Instructions
- Shipping Marks / remarks.

Style Cost Sheet (dual costing, comparison)

Style - Bill Of Material

Export Order Cost Sheet (dual costing, comparison)

Material Requirement Sheet

Master Job Card (in A3 Size)

Measurement Chart

### *Reports*

List Of Styles

Sample Dispatch Register

Material Requirements Report

Export Order Booked / Pending Shipment

Monthly Shipment Projection

Multi Order Job Card

Style Wise Summary

Sample Approval Tracking

Material Requirements  
Material Requisition Report  
Export Order Wise Material Summary

Order Status Report  
Order Tracking Report  
Order Completion Report (OCR)  
E.O. Costing Register  
Budgeted V/S Actual Costing  
Capacity Booking Report  
Documents Requisition Report  
PR Register – Accessory, Fabric, Yarn, General Goods  
Shipment Status For Order  
Order Completion Report Advance  
Garment Outward V/s Export Invoice  
Shipment Performance Report

## **PURCHASE ORDERS MANAGEMENT**

### ***Documents***

Purchase Orders - Fabric \ Accessories \ Yarns \ Garments \ General Goods

### ***Reports***

Purchase Requirement Report  
Material Pending

- Purchases
- Stock Allocation
- Buyer Receipt
- Yarn / Fab /Acc / Working

Purchase Follow-up  
Purchase Order Register - Yarn \ Fabric \ Accessories \ Garments \ General Goods  
P.O. Confirmation – Accessory \ Fabric \ Yarn  
Average Purchase Cost  
Reorder Checklist  
Supplier Re-Evaluation Report  
Bulk PO Printing  
Fabric Approval Dispatch Status  
Import Material Tracking



## **IMPORT and EOU MANAGEMENT**

### **Documents**

FEMA Declaration  
OGL Declaration

Import P.O. – Fabric / Accessory / General Goods

Import L/C Requisition  
L/C Covering Letter  
Import L/C Requisition – Non EOU  
Advance Payment Requisition  
Advance Payment Requisition – Non EOU  
Requisition for Release of Goods

CT 3 form  
Procurement Certificate  
Re-warehousing Certificate  
Issue Application  
Consumption certificate

### **Reports**

Proform Invoice List  
Import Register  
Import Order Status  
Import Clearance Report  
Material Requisition Report  
Purchase Order Register – Accessory / Fabric / General Goods  
Purchase Followup Report  
LC Register  
LC Requisition Register  
Advance Payment Register  
Advance Payment Requisition Register  
Advance Payment Pending List  
Freight Paid Register  
D/P (Payment On Arrival)  
Payment Tracking Report  
Duty Paid Register  
Clearing Agent Bills

BE Submission Register  
Courier Expense register  
AEPC License details  
License register  
License Status  
License Utilisation

## **INVENTORY MANAGEMENT**

### ***Documents***

- Gate Pass – Inward
- Gate Pass – Outward
- Goods Receipt Note (GRN) – Yarn / Fabric / Accessory / Garments / General Goods
- Quality Checking Report
- Material Issue Note (Outward Challans) - Yarn / Fabric / Accessory / Garments / General Goods
- Return Challan - Yarn / Fabric / Accessory / Garments / General Goods
- Local / Export Sale - Challan Yarn / Fabric / Accessory / Garments / General Goods
- Tax Invoice

### ***Reports***

Inward Register - Accessories \ Fabric \ Yarn \ Garments \ General Goods  
Outward Register - Accessories \ Fabric \ Yarn \ Garments \ General Goods  
Across \ Within Transfer Register - Accessories \ Fabric \ Yarn \ Garments \ General Goods  
In \ Out Transfer Register - Accessories \ Fabric \ Yarn \ Garments \ General Goods  
Adjustment Register Accessories \ Fabric \ Yarn \ Garments \ General Goods

Unbilled Delivery Challans - Accessories \ Fabric \ Yarn \ Garments \ General Goods  
Unbilled GRN's - Accessories \ Fabric \ Yarn \ Garments \ General Goods

Stock Ledger – Accessories \ Fabric \ Yarn \ Garments \ General Goods  
Sale Register – Accessory \ Fabric \ Yarn

Bill Approval - Accessories \ Fabric \ Yarn \ Garments \ General Goods  
Bill Details - Accessories \ Fabric \ Yarn \ Garments \ General Goods

Stock Queries with Stock Ageing Analysis

Gate Pass Queries - Inward / Outward

Dead Stock Report

Stock Requirement v/s Free Stock Report

Order Wise Accessory / Fabric Details

Inspection Register

Transport Register

Garment Stock

Garment Stock Valuation

Garment Sale Summary

Orderwise Garment Detail

Garment Return Register

Form Tracking Report

Form 31 Utilization Report

Bulk GRN Printing - From Supplier / Buyer / Processor

Bulk Issue Printing - From Factory / Processor

Garment Stock Detail

Excess And Reject Items For Return

Finish Fabric Receive / Issue Details

## **PRODUCTION MANAGEMENT**

### ***Documents***

Production Orders

Processing Orders

Cutting Requisition

Trim requisition

Yarn Requisition

## ***Reports***

Production Order Status  
Monitoring – Order Wise  
Monitoring – Operation Wise  
Monitoring – Monthly  
Monitoring – Monthly Operation Wise  
Operation Wise Queries  
Production Order Pending

Process Order Follow-up Report  
Process Order Register \ Follow-up Report  
Production Order Re-conciliation  
Production Monitoring - Knitted \ Woven  
Production Monitoring History  
Production Order Wise Material Issue Status (Issue Control Center)  
Operation Wise Monitoring Queries

Issue Consolidation Report (Cutting / Trims)  
Multi Option Production Monitoring  
Multi Production Order Print  
Cutting Completion Report

## **SHIPMENT MANAGEMENT**

### ***Documents - Pre shipment***

Performa Invoice  
Custom Invoice  
Special Custom Invoice  
Packing List - Custom format \ Carton wise \ Generalized  
Shipping Bill \ Shipping Bill - back side \ G.R. Form \ Certificate of Origin  
AEPC Annexures - I \ TC Annex \ EDI Annexure \ SDF Annexure  
Vendor Declaration  
BL Instructions

### ***Documents - Post shipment***

Final (commercial) Invoice  
Final Packing List  
Bill of Exchange  
Bank Certificate  
Letter to the Bank (Covering Letter)  
Certificate of Origin  
G.S.P.

### ***Reports - Management Information System (MIS)***

Pre Shipments MIS  
Post Shipment MIS  
Export Sales Register  
Sample Invoice Register  
  
Export Receivables  
Document Status Report (TNA based)  
  
Drawback Ledger  
Drawback Due to be Received - Claimed \ All  
  
L.C. Register  
Orders without L.C.  
L.C. Utilization  
  
Pre – Shipment Invoice Register  
Bank Realisation Register  
Proforma Invoice Register

## **FINANCIAL ACCOUNTING**

### ***Documents***

Bank & Cash Payment \ Receipt Vouchers  
Debit Notes \ Credit Notes  
Local Sales Invoice  
Purchase \ Sale Vouchers  
Purchase Return \ Sale Return Voucher

Loan Confirmation Letter

Form 16 (TDS Certificate)

Bulk Voucher Printing

### ***Reports – Operational***

#### ***Day Books***

- All Voucher Types
- Bank \ Cash Books
- Petty Cash Book - Multi Column \ Register Format
- Debit \ Credit Note Books
- Journal Book
- Purchase Register
- Credit Expense Register
- Sales Register (Local \ Exports)
- Sale Return

Multi column Purchase \ Expense Register

General Ledger \ Debtors \ Creditors Ledger – Periodic, Monthly

Bank Reconciliation

Post Dated Cheques

Consolidated Outstanding

Accounts Payables – Party Wise \ Bill Wise with Aging Analysis

Accounts Receivables – Party Wise \ Bill Wise with Aging Analysis

Group Wise Payables

Group Wise Receivables

Bill wise Payments Made

Bill Wise Receipts

Sales Tax Reports

Purchase

Local Sales

Credit Expense

Export Sales

Audit Report for Cash

TDS Reports

Party Wise Deductions  
Form 16 A  
Annual Return  
Form 26  
e – TDS Report

Purchase Summary

Local Sales Summary

Export Sales Summary

Garment Inventory

Cost Center

Fringe Benefit Tax Report

Bill Approval – Accessory / Fabric / Yarn / General Goods / Garments

Bill Detail – Accessory / Fabric / Yarn / General Goods / Garments

C Form Entry Report

***Reports - M.I.S.***

Trial Balance \ Group Trial Balance

Group Trial Balance

Trial Balance Date Wise

Trading Account

Profit & Loss Account with Schedules

Balance Sheet with Schedules

Funds Flow

Cash Flow

Consolidated Reports

- Consolidated Trial Balance
- Consolidated Trading A/c /
- Consolidated Profit Loss Account
- Consolidated Balance Sheet
- Consolidated Funds Flow

Order wise Profitability (Summary)

Order wise Profitability (Detail)

Group Summary

Budget Variance Report  
Monthly Expenditures Report  
Monthly Income Report

Reports – Export Finance

- PCL Register
- FDBP Register
- PCL/FDBP Status Report
- Inward Remittance Register
- Forward Booking Register



## HERE ARE THE ANSWERS TO SOME OF THE COMMON QUESTIONS

### 1. Question

Is VisualGEMS capable of Multi-location Implementation ?

#### *Answer*

VisualGEMS is 100% multi-location compliant. This compliance is built into the design and architecture of the software. It supports the most efficient centralized database and multiple business locations which can be branches, factories, warehouses, etc.

### 2. Question

What is special about VisualGEMS? What makes it different from other software packages ?

#### **Answer**

VisualGEMS is not just another package. It is an improved culture to do business. While many companies selling software consider end of relationship when a sale is made, we at OPTIMAL consider the same as beginning of a new relationship. Our full involvement in implementing the system in your organization is an integral part of our commitment.

In fact, our commitment to make your computerization a SUCCESS started much before even making a sale. Right at the stage of designing VisualGEMS we kept in mind the practical difficulties of implementation of an Integrated system. Therefore, in VisualGEMS various modules can be linked or de-linked from integrated system enabling a step by step implementation & usage.

Having tackled the most crucial phase i.e. spreading the VisualGEMS culture in the organization VisualGEMS does not stop here as is the case with most other packages. The management information generation capability of VisualGEMS from this newly created environment makes it a powerful decision making tool rather than a data processing machine.

### **3.Question**

I am already using an Export documentation and /or accounts package. Why should I switch over to VisualGEMS ?

#### **Answer**

VisualGEMS offers Shipment Documentation and Financial Accounting as individual modules along with specially developed total Information Management System for Garment Export industry. Other modules are:

- Export Orders Management
- Purchase Order Management
- Inventory Management
- Production Management
- Import Management

Integrated working in VisualGEMS allows you to monitor all the operations rather than looking at it in a piece - meal basis.

### **4. Question**

Why should I go for computerization instead of my time tested manual system ?

#### **Answer**

#### **The Export Competition**

It's no secret today's marketplace is more competitive than even before. Customers are demanding (and receiving) a greater degree of efficiency and service. And your competitors are becoming more and more eager to increase their share of the market, at your expense. And of course, there's an ever increasing amount of information that needs to be quickly and successfully managed.

But there's no reason to be discouraged by these new demands on your operation. In fact, by taking advantage of new technologies which let you exercise greater control over your activities, you can soon have a more profitable business!

#### **The Solution:**

To help you on the road to increased profits and greater productivity, VisualGEMS was developed.

### 5.Question :

Is VisualGEMS too big to fit into our CURRENT plan of automation ?

#### *Answer :*

VisualGEMS has been designed to let you start small and reach **total automation** with assured results at every state - *all in a record time*. You can choose to start with any of the three alternatives:

- Merchandising (Export Orders, Purchase Orders, Inventory, Production)
- Merchandising + Export Documentation
- Merchandising + Export Documentation + Financial Management

### 6. Question :

Isn't VisualGEMS costly ?

#### **Answer :**

Pay off from using VisualGEMS far out weigh the price you pay for it. In fact price of a single user VisualGEMS installation works out to be much less than one staff's annual salary, far less than number of man-month that will be saved by using VisualGEMS.

In the present liberalized world automation for information management is the back bone of your organization. Correct and timely information is not easy to get. Indeed VisualGEMS is your ultimate bet for this.

*Surely you cannot risk it paying less !*

So a more appropriate question is not

*"Whether you can afford it ?"*

*It is "Can you afford to neglect it ?"*

### **7. Question :**

Is VisualGEMS better than my "TAILOR MADE" software?

### **Answer :**

If you have been getting your software developed using a battery of programmers over a period of time, the chances are that each module is a stand alone working package, but fails to contribute towards an integrated multi-user environment - a prerequisite to a MIS oriented system.

A perfectly tailor made software does offer excellent fit to your requirements. But, by the time software is ready your requirements have changed, or worse! the development staff has changed ! This changing environment is what requires a *flexible* software which is not "tightly" tailored, not to mention the importance of the your computerization partners to be around when you need them.

In dynamic and growth oriented environment every organization is bound to have new requirements. We can assure you that 6 times out of 10 your new requirements will already be a part of VisualGEMS. This is possible due to its developer's global view of Garment Industry and constant updating of software with these requirements. By virtue of our close interactions with our valued customers from a wide cross section of Garment Industry we ensure that we don't just end up tailoring your present needs, but future needs as well.

### **8. Question :**

How will VisualGEMS improve my Documentation work?

### **Answer :**

Documentation is the most critical, very specialized, time consuming and voluminous job in the current manual (or even automated) systems. VisualGEMS will revolutionize the working of your Documentation department. We believe in the culture of giving the tool to the specialist rather depending on associated clerical staff like typists \ operators etc. The specialist makes the document on computer with natural look and feel of the final document & can take a printout directly eliminating the cycle of printing-checking & the corrections again. The productivity gain is multifold.

More than just improved documentation time & quality, VisualGEMS eliminates the bulky registers which are maintained by these people to keep track of this important activity and helps you to take MIS at any instant you feel like.

The added advantage of natural look and feel of documentation is that your staff needs least training efforts on the computer.

## **9. Question**

Can VisualGEMS provide me additional reports or change formats of existing reports / documents to suit my needs ?

### ***Answer***

Occasionally we do custom programming for clients although typically it is not necessary as the "standard" package is extremely feature rich. As part of the support OPTIMAL offers customization of VisualGEMS to suit specific needs. Using its flexible design our software experts will quickly implement the desired changes.

## **10. Question**

Who comes to my help if Apparel Export Promotion Council's procedures change or Export documentation formats are revised ?

### ***Answer***

OPTIMAL'S warranty and annual maintenance program backed by a committed after sales service shall keep you fully protected from such unforeseen demands. Our new releases shall cover all such changing requirements. In a way VisualGEMS serves as a guide for your operational staff on changing regulations & procedures.

## **11. Question**

Do I need to employ more I.T. qualified staff to use VisualGEMS effectively ?

### ***Answer***

VisualGEMS is designed for people who are good in their line of working viz. Accounts, Inventory, Sales, Purchase, Quota, Finance, Export Documentation, etc. Simple, pleasing and user friendly interface offered by VisualGEMS and OPTIMAL'S comprehensive training shall transform your staff to efficient user of computerized system. With continuous support from OPTIMAL's Customer Support Executives the decision to have an in house EDP person is entirely up to you.

In fact, most of our customers consider us their Information Systems Department.

### ***12. Question***

What happens to my EDP / Programming staff?

#### ***Answer***

Now your EDP staff can fully concentrate on delivering what the end users (you & your managers) actually want i.e. Management Information, documents or in short RESULTS. Chores such as system trouble shooting, software de-bugging or struggling to restrict system down time etc. will no more block their valuable time.

The very basis of success of automation i.e. timely assimilation (collection) of raw data and retrieval of processed information will get right priority.

### ***13. Question***

How much time it shall take to get results from VisualGEMS?

#### ***Answer***

Our typical implementation schedule is 6-8 weeks from the time of installation. This means that you will be fully trained and "live" on most of the new system within that time.

Direct results in the organization are seen within 30 days, but the improved culture keeps giving results over the years to come.

### ***14. Question***

How can VisualGEMS help in improving inter departmental communication in my organization ?

#### ***Answer***

Information once fed into VisualGEMS is automatically accessible from anywhere over the network. Thus there is no need to follow -up to get information. This convenience of availability of information on every managers desk-top results in efficient information driven working as against intuitive working. In fact same information can be presented in various formats depending upon nature of use.

***15. Question***

How can VisualGEMS help in fixing responsibilities to respective people and assist systematic working in the organization ?

***Answer***

VisualGEMS makes working of every individual transparent and direction oriented. Monitoring of progress or bottlenecks is possible without any interference. Un-even distribution of manpower or deviation from set procedures or even tempering with the data can be checked.

## **HARDWARE AND PLATFORM CONSIDERATIONS**

The requirements of computer systems (hardware) shall depend upon:

- # Number of modules chosen (in VisualGEMS)
- # Size & volume of the business
- # I.T. Investment budget of the organization
- # I.T. manpower availability, etc.
- # Multi Location structure of the Organization

If you want to begin computerization in a small way & grow in future VisualGEMS gives you the choice to start with single location PROFESSIONAL version and a smooth transition to multi-user LAN based MULTILLOCATION version when the needs grow.

For implementing complete VisualGEMS & effective utilization of each of the modules we recommend the multi-user LAN environment with following configurations:

### **I. Database Server**

**X3650 M3/INTEL XEON E5607 (Quad Core) 2.23 Ghz  
8 MB Cache  
4 GB Ram  
300 GB 10 k SAS HDD  
Combo Drive / Raid**

### **I. Remote Access Server (for Multilocation version)**

Xeon Processor 3.0 GHz  
2 GB RAM or higher  
80 GB HDD or higher preferably SCSI  
CD ROM Drive

Windows Advance Server 2000 or Windows 2003

### **II. Node (end user workstations)**

Pentium P - IV or higher  
256 MB RAM or higher  
40 GB HDD or Higher  
CD ROM Drive

Windows 98 / Windows 2000 Professional / Windows XP



### **III. LAN Topology**

We recommend Ethernet UTP topology for better thruput & reliability. Structured cabling using SNMP hubs shall be very useful for long & undisturbed life of cabling & shall be easy to upgrade.

100 MBPS HUBS with 32 BIT PCI LAN card are recommended for faster data transfers between server & nodes.

For distributed networks we suggest 100 MBPS SWITCH.

#### **VisualGEMS SIZE :**

The Standard version of VisualGEMS is distributed in a CD ROM The standard VisualGEMS software (comprising of 15 modules) requires approximately 150 MB of Hard Disk space. Additional 500 MB should be free for swap space.

We can advice on exact hardware configuration after studying your organization's volume of work & specific needs.

----- X -----